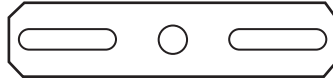


Works With Jandorf Crossbars:

- #60204 – Center Tapped 1/8 IP
- #60207 – Strap Fixture Bar
- #60208 – Center Tapped 1/4 IP
- #60209 – Center Tapped 3/8 IP



A

What's Inside

1 – 4" Flat Crossbar (A)

What's Its Purpose

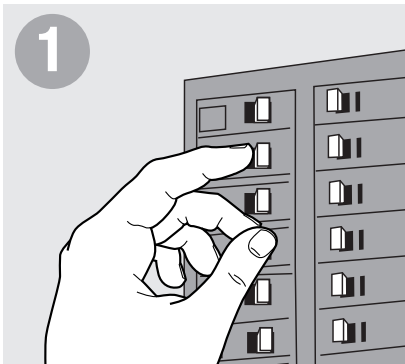
Mounting light fixtures with a nipple.

What's Needed

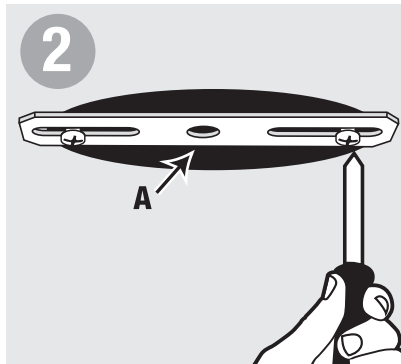
- Mounting Screws
- Wire Nuts
- Screwdriver
- Wire Insulation Stripper
- Pliers

Warning

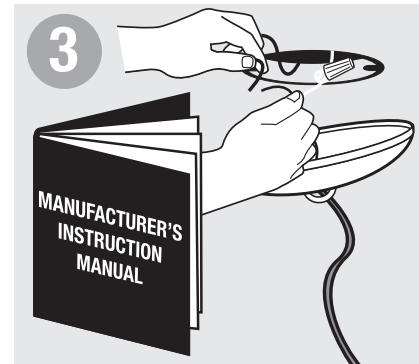
- Before beginning **TURN OFF POWER** to the light from the fuse or circuit breaker.
- Follow local electrical regulations or codes when installing and using this product.
- When installing fixture directly to outlet box, outlet box must be capable of supporting 50 lbs. and be supported by the building structure.



1
 Before beginning **TURN OFF POWER** to light from fuse or circuit breaker.



2
 Place flat side of crossbar (A) onto electrical box and attach with two mounting screws.



3
 Securely install fixture following manufacturer's instructions.